



GEA Farm Technologies

E-brush, M-brush

Animal welfare into the cow housing



GEA Farm Equipment | Mullerup

GEA Farm Technologies – The right choice.

GEAS cow brushes are designed for herds in loose housings. They are fully automatic and keeps the animals clean and free of vermin. A clean coat insulates smaller, improves circulation and increases heat loss. The double comfort of two brush diametres adapts to the build and size of the animal, while ensuring that the cows can reach inaccessible places such as head and tail. The durable nylon brushes change direction at every start and thus ensures uniform wear.

- Optional fixtures for wall, tube or squarebar
- Capacity is 50 cows each cow brush

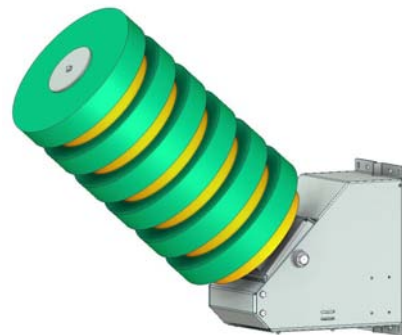
E-brush (horizontal)



The horizontal design of the E-brush ensures cleaning and brushing where it is most needed: on the cow's back. The pendulum design ensures optimum backstop and effect.

Voltage.....	230V/50 Hz
Motor.....	0,37 kW
Rotation, motor.....	1400 rpm
Rotation, brush.....	35 rpm
Brush diameter.....	400 mm and 500 mm
Weight.....	70 kg
Dimension W x H.....	1100 x 720 mm

M-brush (diagonal)



The diagonal design of the M-brush cleans both the cow's back and down the sides, and the stationary rotation ensures - unlike free-hanging vertical brushes - greater backstop.

Voltage.....	230V/50 Hz
Motor.....	0,37 kW
Rotation, motor.....	1400 rpm
Rotation, brush.....	35 prm
Brush diameter.....	400 mm and 500 mm
Weight.....	85 kg
Dimension W x H.....	1300 x 1090 mm



GEA Farm Technologies Mullerup A/S

Vestergade 11 B, DK-5540 Ullerslev
 Tel. +45 63 35 14 22, Fax +45 63 35 14 00
 geaft.mullerup@geagroup.com, www.mullerup.com, www.gea-farmtechnologies.com